

**PAPER TITLE - USE CAPITAL LETTERS, CENTER, BOLD, TIMES  
NEW ROMAN, 12 pt**

*First author Name and SURNAME (10 pt italic, center alignment),<sup>1</sup>*

*Second author Name and Surname (10 pt italic center alignment),<sup>2</sup>*

*Third author Name and Surname (10 pt italic, center alignment),<sup>3</sup>*

*\*Responsible author E-mail: (10 pt italic, center alignment)*

**Abstract (bold)**

Abstract should contain from 100 to 150 words. In the abstract, citations of other authors, abbreviations and mathematical formulas should be avoided.

Abstract is a summary of the entire article, written in one paragraph. It is desirable to include the objectives, methodology, key results, conclusions and recommendations for further research.

For writing, use Times New Roman, 10 pt

Keywords: (4-6)

Keywords should reflect the main topics of the paper, and be frequently used in index databases when searching for works, Times New Roman, Italic, 10 pt

*JEL: ([www.aeaweb.org/jel/jel\\_class\\_system.php](http://www.aeaweb.org/jel/jel_class_system.php))/Times New Roman, Italic, 10 pt*

To achieve optimal formatting, the following paper structure is recommended:

---

<sup>1</sup> Name and surname, title, institution, address, telephone, e-mail, ORCID ID  
(<https://orcid.org/>)

<sup>2</sup> Name and surname, title, institution, address, telephone, e-mail, ORCID ID  
(<https://orcid.org/>)

<sup>3</sup> Name and surname, title, institution, address, telephone, e-mail, ORCID ID  
(<https://orcid.org/>)

## INTRODUCTION

Page setup: Format B5: width 182 mm, height 257 mm; Margins: top/bottom 22.9 mm, left/right 25.4 mm; Appearance: header 12.7 mm, footer 17.8 mm; Orientation: portrait.

The paper should be written in Serbian. We recommend writing in the third person singular or plural using the active form. Before submitting the paper, it is necessary to check the grammatical and spelling correctness of the text.

The length of the paper should be up to 36,000 text characters (with spaces) or up to 20 pages including text, figures, tables, list of references and appendices. Papers should not be shorter than 10 pages. Depending on the quality of the article, the Editorial Board can also accept longer works (over 20 pages, i.e. more than 36,000 characters). The paper must be written electronically, in MS Word 2003 or a newer version of this program.

The introduction is the first part of the article. Its purpose is to clearly state the research problem and to provide the reader with background information about the research. The Introduction should set the objectives of the paper, provide background in the scientific literature in order to better understand the context of the research. Avoid a detailed review of the literature as well as a summary of your results. Most of the Introduction should be written in the present tense.

Use Times New Roman, 11pt, spaces between paragraphs before 6pt, after 6pt.

Abbreviations and acronyms should be defined at their first appearance in the text, even if they were previously defined in the abstract. Do not use abbreviations in the title of the paper, unless they cannot be avoided.

Chapters/subheadings should be written in Times New Roman font, font size 11, bold, left alignment, space between subtitles and paragraphs before 12 pt, after 12 pt, without numbering. Use the writing style presented in this template:

- first **SUBTITLE** - left alignment, capital letters, bold, font size 11pt, space between paragraphs before 12 pt, after 12 pt.
- second **Subtitle** - Left alignment, only the first letter capital, font size 11pt, bold, space between paragraphs before 12 pt, after 12 pt.
- third *Subtitle* - Alignment to the left, only the first letter is capitalized, font size 11pt, italics (*italic*), space between paragraphs (before 12 pt, after 12 pt).

## LITERATURE REVIEW

The literature review should identify and explain basic concepts and theories relevant to the research being conducted. It is necessary to mention key authors and papers that influenced the research or those that were used as a basis for the research. The literature review should contain the results and findings of relevant research related to the analyzed topic, a description of the methodology used in the studied articles and limitations in the existing literature.

## METHODOLOGY

In this part of the paper, it is necessary to describe in detail the methodology used in the research in a clear and precise way, with enough detail, in order to provide a basis for replicating the research on another sample, another time period or using similar estimation methods. Methods that have already been used in previous research should be indicated by reference.

For equations and formulas, use the equation editor (Insert/Equation) in the Microsoft Word program or the MathType equation ([www.mathtype.com](http://www.mathtype.com)). Check that all symbols within equations/formulas are defined and visible. Equations should be written in italics, numbered in brackets in the right margin, with one line of space above and below, as indicated below:

$$B_t = \sum_{i=1}^{+\infty} \rho^i E (R_{t+i} - G_{t+i}) \quad (1)$$

## RESULTS

The presentation of the results should serve as a basis to confirm or reject the goals/hypotheses from which the research started. The results should be clearly and concisely presented. Results must be written in the past tense.

## DISCUSSION

The discussion begins with an interpretation of the main results of the research. Along with a detailed analysis of the most important results, it is necessary to compare the obtained results with the findings of other relevant research. The identification of similarities, differences and consistency in the obtained results in relation to the results of other authors enables a clear determination of the scientific contribution of the work. Within the discussion, it is possible to include a short synthesis of the relevant literature. In the event that unexpected or counterintuitive results are identified, an explanation should be provided regarding the factors that may have influenced the results. The discussion should include the broader implications of the obtained results in the context of the research area, as well as the limitations or potential weaknesses of the research that could affect the reliability or applicability of the results.

## CONCLUSION

In conclusion, a summary of the most important findings and their implications presented in the paper should be given. Conclusions should be clearly formulated and reflect the key points of the work. Within the conclusion, it is desirable to propose guidelines for future research that would build on the presented article.

## LITERATURE

At the end of the paper, a list of used literature should be provided, in alphabetical order, with alignment, size 10 pt, according to the APA (American Psychological Association) reference style.

Authors should cite relevant literature, ideally papers from prestigious indexed journals such as the JCR list. References should include the most recent findings published within the previous 5 years. The paper should contain from 20 to 40 references. The list of references should only contain references that are cited in the text.

For in-text citation, use the following format:

- 1) For the paper: Last name of the author, year of publication (e.g. *Jung and Myers, 2022*). If there are more than two authors (*Pennings et al., 2021*).
- 2) For the law: *Law on corporate income tax (year)*;
- 3) For the regulation: *Regulation (EU) no. 2019/2033 on creditworthiness requirements for investment companies (the abbreviation Regulation No. 2019/2033 can also be used)*.

### *Examples of references by sort*

#### *Journal article*

**Talani, L. S.** (2015). The challenges and countermeasures of blockchain in finance and economics. *Journal of Balkan and Near Eastern Studies*, 17:4, 353-372.

**Gärtner, M., Griesbach, B., & Jung, F.** (2011). PIGS or Lambs? The European Sovereign Debt Crisis and the Role of Rating Agencies. *Int Adv Econ Res* 17, 288–299.

#### *Book*

**Damodaran, A.** (1987). *Corporate Finance: Theory and Practice*. Wiley.

#### *Book chapter*

**Shaffer, C.** (2009). Competition in the US banking industry? In Resource and market-based determinants of performance in the U.S. banking industry, ed. Ihsan Isik and Kabir Hassan, 123–152. Washington Press.

#### *Conference report*

**Pennings, S.** (2019). Blockchain application and outlook in the banking industry. In O. Havrylchyk & A. Beatty (Eds.), *Financial accounting in the banking industry*, 152-160. Spain: EAS.

#### *Web page*

**National Bank of Serbia.** (2023). *Statistics*. [https://www.nbs.rs/sr\\_RS/drugi-nivo-navigacije/statistika/](https://www.nbs.rs/sr_RS/drugi-nivo-navigacije/statistika/)

#### *PhD thesis*

**Bill, J.** (2021). Competition, concentration and their relationship: An empirical analysis of the banking industry. PhD diss. University of Oxford.

*Regulations*

**Law on Profit Tax of Legal Entities (year);**

**Regulation (EU) no. 2019/2033** on creditworthiness requirements for investment companies (the abbreviation Regulation No. 2019/2033 can also be used).

*Citation list of references:*

**Serbia.** (year). Name of the tax law of Serbia (Number of official gazette/identifier);

**European Union.** (year). Regulation (EU) no. [Regulation Number] of [Date of Publication] on [Title of Regulation]. Official Journal of the European Union, [Volume number], [Page range].

**Regulation (EU)** no. 2019/2033 on creditworthiness requirements for investment companies, OJ L 314, 5 December 2019, pp. 1-63.

## TABLES AND GRAPHS

All tables should be numbered with Arabic numerals.

Tables must be created within the text of the paper, and not taken as images from other documents. Tables should be numbered according to the order of their appearance. Table titles must be given immediately above each table to which they refer. Use the following style when formatting them. The title of the table should be placed with an intermediate space of 6 pt - before and 3 pt - after, in Times New Roman font, font size 11, alignment Centered. The text in the table should be written in Times New Roman font, font size 10. Bold the text in the title. The source of the table should be below the body of the table (Times New Roman, 10 pt, Italic, left alignment). Start a new paragraph with 6 pt spacing from the source of the table or note (after). The complete text inside the table cells should be entered in the following form (paragraph - spacing: before/after 0 pt, spacing: single). In case the table breaks on the next page, the broken part of the table on the next page must be followed by the same table header.

Footnotes in tables should be indicated in lowercase letters (or asterisks for statistical significance values and other statistical data) and included below the body of the table. It is recommended that all images, graphs, etc. sent in electronic format.

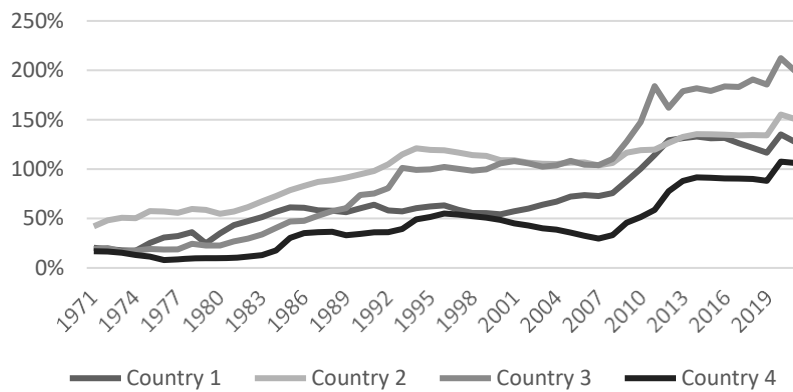
**Table 1. Table title**

	<b>I</b>	<b>II</b>	<b>III</b>	<b>IV</b>	<b>V</b>
2021	text	text	text	text	text
2022	text	text	text	text	text
2023	text	text	text	text	text

*Source: Specify the source*

Images, graphs, illustrations, diagrams, etc. must be created in specialized software or scanned and inserted into the text. Resolution 300 dpi or more, black and white technique for quality print content. Photos - scanned with high contrast. The title of the image should be placed with a space of 6 pt before and 3 pt after, in Times New Roman font, font size 11, alignment Centered. The source should be cited below the figures, graphs and diagrams (Times New Roman, 10pt, italic, left alignment). Start a new paragraph with 6 pt spacing from the image or chart source (after).

**Graph 1. Normal distribution of frequencies**



*Source: Specify the source*

## **ACKNOWLEDGMENTS**

Write the acknowledgment in a separate section at the end of the work, after the list of references. Individuals/institutions that provided assistance during the research are listed. Here are examples of how to structure and write acknowledgments in the paper:

"This work is the result of a scientific research project, code 241923 (Introduction of sustainability reporting and management in the Western Balkans: New regulation and alignment with EFRAG standards) funded by the European Commission and EFRAG."

## **CONFLICT OF INTEREST**

The authors declare that there are no financial, professional or personal relationships that could lead to bias in the results or interpretation of this research.